

ARCHANGEL TOKEN



Collaboration Network

v2.0 october 2021



The Vision for our Collaboration Network

The ArchAngel Token community spent the first two weeks of our existence working on defining a set of dynamic tokenomics that had the ability to sustain a multi-generational project over a long-term horizon. We carefully took each step to ensure that every aspect of our tokenomics supported our technical roadmap throughout all phases of global crypto and digital asset adoption. A major aspect of our project relies on collaboration within a community of developers, engineers, analysts, and critical thinkers.

Fact: Most tokens within Crypto start off without a known use case or they have a predetermined use case that drives the tokenomics. A contract is written to support that single use case or feature and the token assumes a shallow one-dimensional capability.

The Fix: Our approach was to create a token with underlying tokenomics to support all aspects of technical advancement and achievement. Our [Collaboration Network](#) is the engine of problem-solving and technical solutioning that drives our Technical Roadmap.



Organized to Maximize Collaboration

ArchAngel's maximum potential is realized through the dynamic communication network we have established within the project to execute our project roadmap. This approach ensures the entire community is engaged on concurrently executed initiatives while reducing bottlenecks typically seen in siloed or "firewalled" projects. This network of collaboration stimulates the generation of ideas, the practice of research, and the mindset of critical thinking and problem solving. Initiatives which add value and/or solve problems are then immersed into design, engineering, development, testing, and fielding.

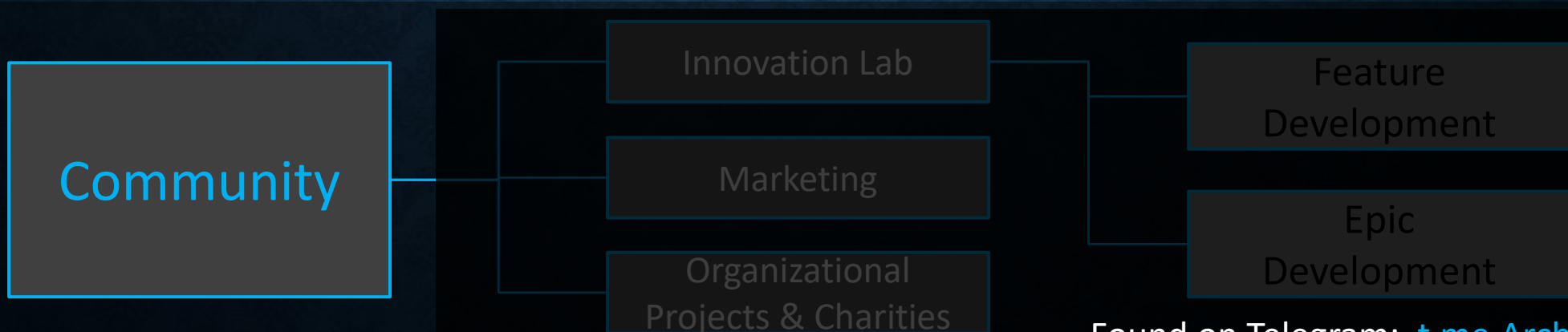




#1 Our Community

The Community is ArchAngel's #1 most valuable and dynamic asset. We want to attract both the experienced and the inexperienced alike. There are millions of people within crypto and it is certain that solutions to problems (as well as new innovative ideas) already exist in the minds of this vast global community. We are going to harness that incredible power and show the crypto world what a multitude of innovative minds can accomplish.

Our primary telegram channel is our project's welcome mat. It is where we offer a warm welcome, answers to questions, and describe the purpose of the project. This is also where we present ongoing initiatives and invite all to watch, collaborate, and actively participate.

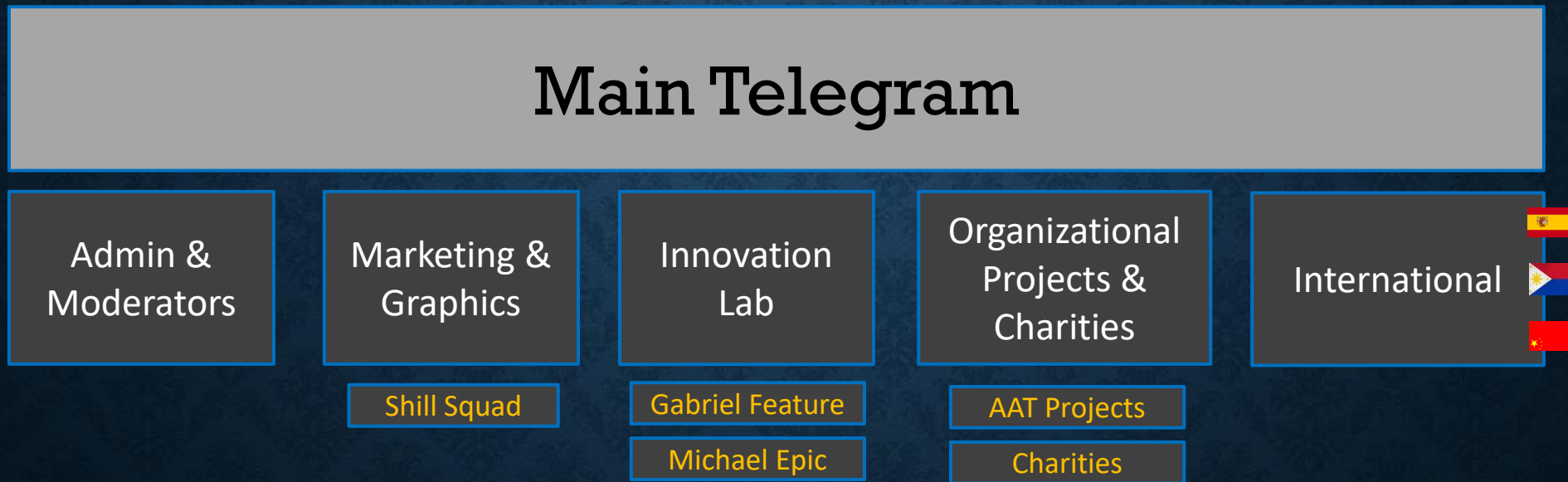


Found on Telegram: [t.me.ArchAngelToken](https://t.me/ArchAngelToken)



Primary Telegram Network

Our Collaboration Network within telegram has both primary groups and core focus groups as depicted below. This network promotes collaboration throughout the entire ArchAngel ecosystem. Each group has a core focus area at the upper level and then branches out to lower levels according to the initiatives that group has decided to execute.



Our International Community is growing every day and we are constantly adding new telegrams so that non-English speaking communities can actively participate.



Core Focus Groups

Ideas generated within our main Community forum that gain traction and popularity are then directed to one of our three core focus groups for further refinement. These groups are open to the public and any member of the community can join these groups based on their area of interest and desire to participate in more detailed research and development.

Innovation Lab: Explores technical topics and conducts discovery, research, and analysis.

Marketing: Works on maximizing our social engagements across every possible outlet.

Org Projects & Charities: Focuses on identifying ways we can improve our global community.



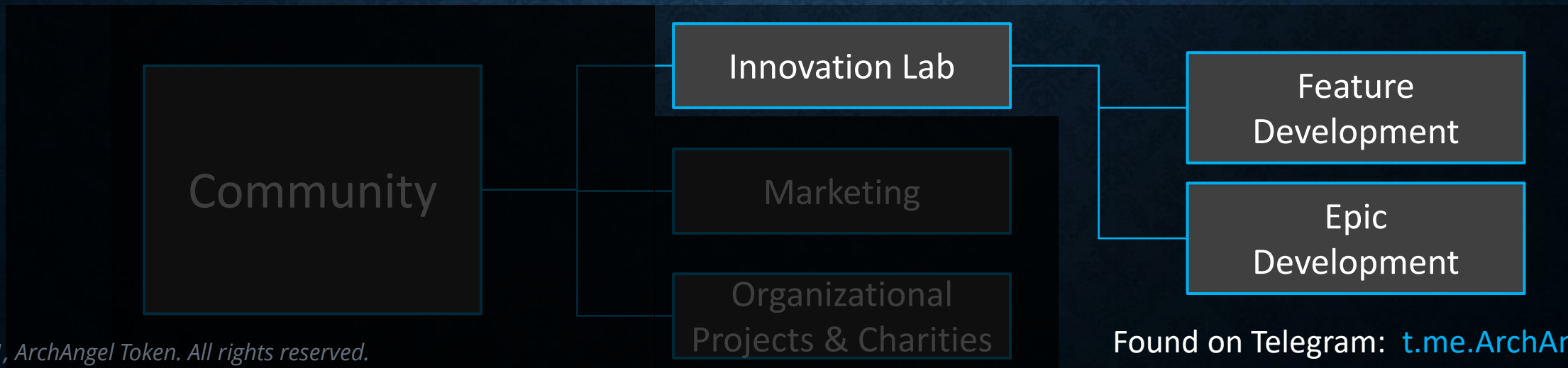


Innovation Lab (IL)

Ideas that originate from our Community move into the “IL” for subsequent research, analysis, and high-level problem solving. This is where root cause analysis is performed, and technical ideas become refined to determine follow-on steps with the community.

Feature Development: A core group of developers focus on specific community-selected Features already assigned to a development timeline within our Technical Roadmap.

Epic Development: A core group of developers focus on broader crypto sector Epics (large features) already assigned to a development timeline within our Technical Roadmap.





The Power of the Community

The ArchAngel community is the driving force behind this token and the underlying projects we are executed. Most tokens and projects within Crypto were started with a very narrow technical vision and supportable path. Most crypto projects were not built to grow, sustain, and expand their technical capabilities without limitations or restrictions as crypto's global adoption accelerates and introduces new problems to solve.

Instead of cornering ourselves with a fixed technical solution with limited tokenomics, we built tokenomics that offer unlimited exploration, growth, and the ability to support phenomenal technical advancements deep into crypto's global adoption cycle.

Our Community's potential is unrestricted.

We have no tokenomics obstacles.

We have no technical limitations.

We have no ecosystem barriers.

We are the ArchAngel Token.